

CONTENTS

Welcome Message
Remote Learning Support
Academic Support
Well-being Support

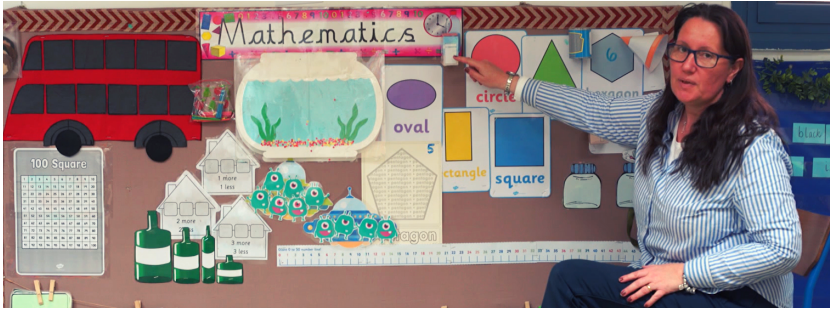
Student Engagement Support
Jewels of Kindness Challenge
Thank you to Superheroes
We Miss You
Stay Safe from Mrs Bateman

Future Planning Update
Staff Recruitment
Academic Calendar 2020-2021

 Ramadan Kareem

REMOTE LEARNING SUPPORT

I am delighted to report that our remote learning provision has got off to a very smooth start on our revised Ramadan hours schedule and I would like to start by thanking all our dedicated and committed staff for continuing to display the highest standards of professionalism in supporting all our students at this challenging time.



We are monitoring student attendance on a daily basis by transferring all logins on our Virtual Learning Platform across to our Phoenix Attendance System, and I am pleased to report that we are continuing to maintain attendance rates in our schools, which are higher than the average physical classroom attendance rates. In addition, we are also regularly reviewing the feedback from the GEMS Remote Learning surveys that are being sent out to all parents for completion, and again I am very pleased to report that we are averaging overall satisfaction rates with the remote learning provision of approximately 90 per cent, which is similar to the rates for our partner schools in the United Arab Emirates.

Of course, we are never complacent and will always look to make improvements, where necessary, but these overall satisfaction rates are a testimony to the success of the entire GEMS Community in coming together to support and, indeed, enhance, our learning and teaching provision at this time.

Virtual Welcome Back to Term 3 and Ramadan Kareem



Dear GEMS Family

I would first like to welcome you all back to Term 3 of this unprecedented academic year and wish you a blessed and healthy Holy Month of Ramadan. I hope that all students, staff and parents had a peaceful and relaxing Spring Break, and were able to recharge their batteries for the term ahead.

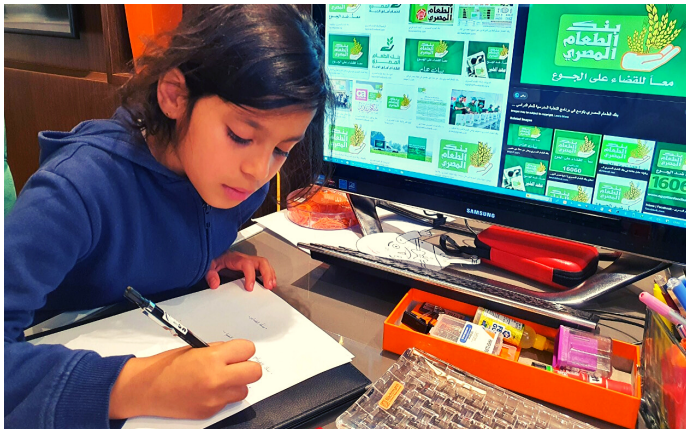
Stuart Bryan

MA Hons (St. Andrews), PGCE (Oxon.)
Vice President, GEMS Education, Egypt



ACADEMIC SUPPORT

We are continuing to offer our students maximum support in terms of meeting all the revised expectations that have been set by the Ministry of Education and UK Examination Boards, and we have sent out detailed communication to parents regarding both these matters.



Our Arabic staff are doing a tremendous job in supporting students, with the completion of their Ministry projects, which will need to be uploaded to our Virtual Learning Platform by the 11 May 2020. Likewise, we are continuing virtual live Teams lessons for all our UK examination classes and teachers are working very closely with students to ensure that we have sufficient evidence to support the estimated grades that we are required to submit to the examination boards for the Summer 2020 examination session. We are determined that we will support our students as best we can through this process to get the examination grade that they deserve, whilst recognising at the same time that the final decision of these official results will be issued by the examination boards themselves and the actual grades may be different than the ones submitted by the school, due to the examination board standardisation process.

IT IS IMPORTANT FOR CHILDREN TO GET TIME AWAY FROM SCREENS

Check the Wellness Programme Ideas and Creat Your Own List

WELLBEING SUPPORT

Given all this talk of projects and examinations, I would like to remind all our parents, staff and students that our primary concern at this time is to support your wellbeing. We do hope that you are all healthy and safe and also taking some personal time to enjoy being with your families (if with you), especially during the Holy Month.

We would encourage all our parents to try and maintain the wonderful routines for learning, which you established last term, during our revised Ramadan hours.

We have also put together a wonderful range of Wellbeing tips and activities to support you during this time. You can access our first issue of the Wellness Programme from the links below or from Parent Resources tab on school website.

Primary Wellness Programme

GEMS WELLNESS PROGRAMME - PRIMARY THE BRITISH SCHOOL BELLA

THE MEANING OF WELLBEING
An overall sense of wellness will not be achieved without having a balance in these key elements:

- Physical
- Emotional or psychological
- Social
- Spiritual
- Intellectual
- Economic

TBS

GEMS WELLNESS PROGRAMME - PRIMARY THE BRITISH INTERNATIONAL SCHOOL MADINET

THE MEANING OF WELLBEING
An overall sense of wellness will not be achieved without having a balance in these key elements:

- Physical
- Emotional or psychological
- Social
- Spiritual
- Intellectual
- Economic

BISM

Secondary Wellness Programme

GEMS WELLNESS PROGRAMME - SECONDARY THE BRITISH SCHOOL BELLA

THE MEANING OF WELLBEING
An overall sense of wellness will not be achieved without having a balance in these key elements:

- Physical
- Emotional or psychological
- Social
- Spiritual
- Intellectual
- Economic

TBS

GEMS WELLNESS PROGRAMME - PRIMARY THE BRITISH INTERNATIONAL SCHOOL MADINET

THE MEANING OF WELLBEING
An overall sense of wellness will not be achieved without having a balance in these key elements:

- Physical
- Emotional or psychological
- Social
- Spiritual
- Intellectual
- Economic

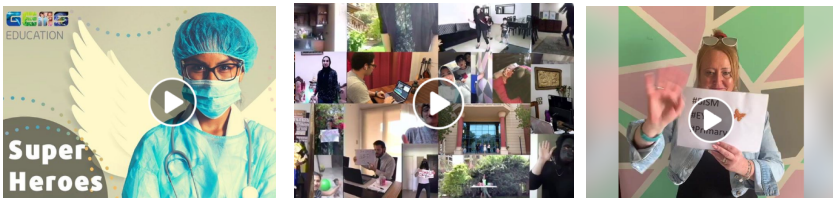
BISM

STUDENT ENGAGEMENT SUPPORT

There is also nothing like having some fun and engaging our entire GEMS community at this time, when we, unfortunately, cannot be all together.

Our talented teaching staff have put together some wonderful videos to maintain the connection with their students, and I am sure make them smile (a lot!), whilst **our amazing students** have really demonstrated their talents and enthusiasm with their numerous videos sent to our various Facebook campaigns.

In particular, the GEMS Jewels of Kindness video in support of all our dedicated and compassionate health care workers at this time was very special indeed.



Thank You

We Miss You

Stay Safe



I would like to encourage all our amazing students to take the Jewels of Kindness Challenge and help spreading the positive vibes and instilling happiness during the month of Ramadan.

[Get the detail from here](#)

FUTURE PLANNING UPDATE



In spite of our understandable focus on ensuring the best possible remote learning experience at this time, you will be reassured to know that we have also maintained our planning for all our strategic plan initiatives, which we outlined at the many Parent Forums, which were held at the schools just before the remote learning provision was initiated.

STAFF RECRUITMENT

In particular, we have retained our focus, during this time, on recruiting the best possible teachers for our schools through the Times Educational Supplement (TES) platform, and I am pleased to report, that, **even given such a challenging environment, we have been able to secure some excellent staff for next academic year.** Moreover, with one or two exceptions, we have been able to fill every single vacancy that we wanted to fill at this stage, which is a much earlier and better situation to be in than we were at the same time last academic year.

In this regard, I would like to thank all the educational leaders and the Human Resources department, who have been busy throughout this period interviewing potential staff and confirming all arrangements for their hire for next academic year.

teachers

SCHOOL CALENDAR 2020 - 2021

Finally, as part of this planning process, I would also like to confirm the **School Year Academic Calendar for next academic year 2020 - 2021**, subject, as always, to any Ministry of Education announcements. The academic calendar has been reviewed and discussed at length with the School Management Teams and feedback sought from the School Advisory Councils (SACs).

We have sought to maintain an academic calendar which is best practice amongst British International Schools worldwide and here in Egypt, whilst at the same time, of course, respecting local religious and national holidays. The above factors mean, out of necessity, that any school calendar will be a compromise!

The next academic year is scheduled to start on **Sunday 6 September 2020** for students and end on **Tuesday 29 June 2021**.

As per the British International School Model, each term is broken up by a half-term holiday (in the summer term this will be Coptic Easter, Sham EL Nessim and Eid Al Fitr holidays), with more major Winter and Spring holidays at the end of each term in line with international school practice. The last day of each major term Winter, Spring and Summer will also be a half-day for students!

We are confident that the confirmed calendar will provide our students with more than sufficient opportunity to cover all the requirements of their curricula, given that our school-day is somewhat longer than many comparable schools in the UK and around the world.

Please Click to access the School Year Academic Calendar for 2020 – 2021

I would like to wish you all a very good summer term, with a reminder that the last day for students will now be **Tuesday 16 June 2020**.

